

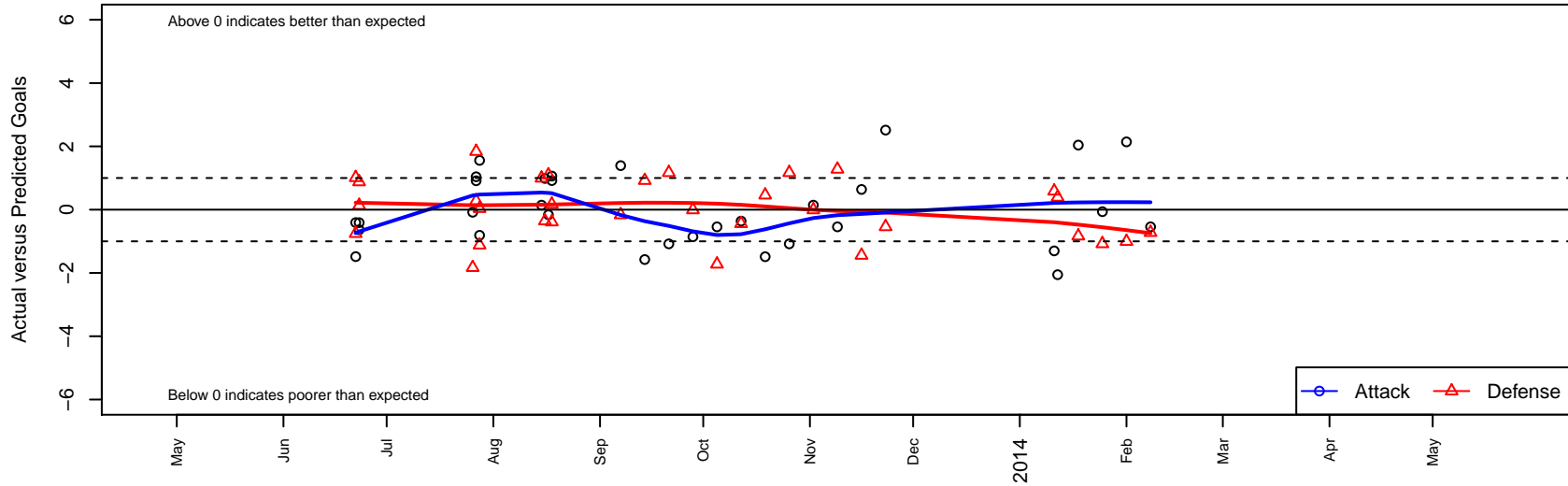
Lake Hills Extreme G01

Lake Hills SC
 Bellevue, WA
 G01 total strength=617
 attack=0.56 defense=0.51
 fall league = NPSL G12D1
 alt names used:
 Lake Hills Extreme G01

Venues played:
 Yakima Mid Summer Classic GU12
 Crossfire Select Cup GU12 Gold
 Bigfoot Silver U12
 NPSL G12D1
 Founders Cup G01



Lake Hills Extreme G01
 Dots are actual minus expected GF (blue circles) and GA (red triangles).
 Blue line is smoothed change in attack strength. Red is smoothed change in defense strength.



	date	home		away		venue	pred.home	pred.away
7016	2014-02-08	NSC Velocity G01	2	Lake Hills Extreme G01	0	Founders Cup G01	1.28	0.54
6987	2014-02-01	Kent United Green G01	2	Lake Hills Extreme G01	3	Founders Cup G01	0.99	0.86
6961	2014-01-25	Lake Hills Extreme G01	1	Washington Timbers Burgundy G01	2	Founders Cup G01	1.06	0.92
6910	2014-01-18	Lake Hills Extreme G01	6	CSC Velocity Green G01	1	Founders Cup G01	3.96	0.17
6893	2014-01-12	Mukilteo Rush G01	0	Lake Hills Extreme G01	2	Founders Cup G01	0.39	4.05
6865	2014-01-11	Seattle United Shoreline Blue G01	0	Lake Hills Extreme G01	1	Founders Cup G01	0.59	2.30
6668	2013-11-23	Lake Hills Extreme G01	6	MIFC Thunder G01	1	NPSL G12D1	3.49	0.46
6582	2013-11-16	Seattle United S Black G01	2	Lake Hills Extreme G01	2	NPSL G12D1	0.56	1.36
6478	2013-11-09	NSC Velocity G01	0	Lake Hills Extreme G01	0	NPSL G12D1	1.28	0.54
6337	2013-11-02	Lake Hills Extreme G01	1	Kent United Green G01	1	NPSL G12D1	0.86	0.99
6179	2013-10-26	Crossfire Select Granston G01	0	Lake Hills Extreme G01	0	NPSL G12D1	1.17	1.08
6020	2013-10-19	MIFC Thunder G01	0	Lake Hills Extreme G01	2	NPSL G12D1	0.46	3.49
5860	2013-10-12	Lake Hills Extreme G01	1	Seattle United S Black G01	1	NPSL G12D1	1.36	0.56
5672	2013-10-05	Lake Hills Extreme G01	0	NSC Velocity G01	3	NPSL G12D1	0.54	1.28
5505	2013-09-28	Kent United Green G01	1	Lake Hills Extreme G01	0	NPSL G12D1	0.99	0.86
5367	2013-09-21	Lake Hills Extreme G01	0	Crossfire Select Granston G01	0	NPSL G12D1	1.08	1.17
5200	2013-09-14	Lake Hills Extreme G01	0	Crossfire Select Wilkinson G01	0	NPSL G12D1	1.58	0.92
5047	2013-09-07	Seattle United W Blue G01	1	Lake Hills Extreme G01	3	NPSL G12D1	0.84	1.61
4825	2013-08-18	Lake Hills Extreme G01	2	Crossfire Select Granston G01	1	Bigfoot Silver U12	1.08	1.17
4826	2013-08-18	Orting FC Pumas G01	1	Lake Hills Extreme G01	2	Bigfoot Silver U12	0.61	0.94
4751	2013-08-17	Lake Hills Extreme G01	1	Highline Premier Blue G01	0	Bigfoot Silver U12	1.16	1.10
4713	2013-08-16	Lake Hills Extreme G01	3	Eastside FC Blue G01	1	Bigfoot Silver U12	2.01	0.64
4702	2013-08-15	Lake Hills Extreme G01	1	Kent United Green G01	0	Bigfoot Silver U12	0.86	0.99
4417	2013-07-28	RSA Elite Heather G01	2	Lake Hills Extreme G01	3	Crossfire Select Cup GU12 Gold	0.88	1.44
4419	2013-07-28	Lake Hills Extreme G01	0	Wenatchee Fire Black G01	1	Crossfire Select Cup GU12 Gold	0.81	1.03
4369	2013-07-27	Cascade FC -Unk G01	0	Lake Hills Extreme G01	3	Crossfire Select Cup GU12 Gold	0.28	1.96
4376	2013-07-27	Lake Hills Extreme G01	2	CWSA Navy G01	0	Crossfire Select Cup GU12 Gold	1.09	1.84
4339	2013-07-26	Lake Hills Extreme G01	1	Crossfire Select Granston G01	3	Crossfire Select Cup GU12 Gold	1.08	1.17

	date	home		away		venue	pred.home	pred.away
4008	2013-06-23	Wenatchee Fire Orange G01	0	Lake Hills Extreme G01	1	Yakima Mid Summer Classic GU12	0.88	1.64
4011	2013-06-23	Spokane Foxes Platinum G01	3	Lake Hills Extreme G01	0	Yakima Mid Summer Classic GU12	3.13	0.41
3991	2013-06-22	Lake Hills Extreme G01	2	Silver FC G01	1	Yakima Mid Summer Classic GU12	3.48	0.25
3994	2013-06-22	Lake Hills Extreme G01	1	ASE Royal G01	0	Yakima Mid Summer Classic GU12	1.41	1.01